

Contact: Ken Gioeli, (772) 462-1660

Released: May 11, 2006

PRESS RELEASE
POND APPEAL: Managing Algae & Other Aquatic Plants

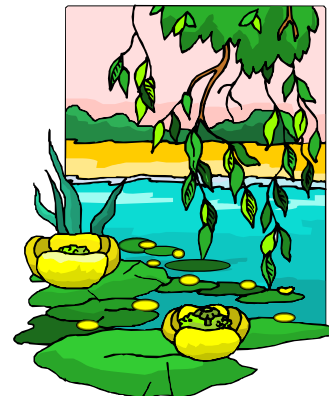
St. Lucie County is rapidly growing in population. This rapidly growing population, predominantly composed of non-native Floridians, relocated to St. Lucie County from areas where environmental conditions are significantly different. This has led to a gap in awareness knowledge and understanding of the interactions between people and the Florida environment. New and long-term residents alike must learn to adapt to Florida living styles in order to maintain the integrity of the county's environmental resources.

A Pond Appeal workshop sponsored by the University of Florida St Lucie County Extension Service and IRCC's Agriculture Department will be held on June 14th from 6:30 pm – 8:30 pm at the Schriber Conference Center at the IRCC Campus in St Lucie West located at 500 N.W. California Blvd in Port St Lucie. The goal of the course is to teach participants best management practices necessary to maintain healthy Florida ponds. Workshop presentations include managing algae and plants in ponds.

Pre-registration is required. Call the St Lucie County Extension Service at (772) 462-1660 to sign up for this informative workshop. For additional information about this Pond Appeal program, contact Ken Gioeli, Natural Resources Agent, at (772) 462-1660.

Please help us get the word out to our community about this educational opportunity. People with disabilities in need of reasonable accommodations should make requests one week prior to the program.

POND APPEAL



Pond Appeal: Managing Algae & Other Aquatic Plants

Offered by the Univ of Florida / St Lucie Co Extension and IRCC Ag. Dept.

June 14, 2006
6:30 pm – 8:30 pm
IRCC – ST LUCIE WEST
CONFERENCE CENTER

Learn how to identify and manage your pond's algae and aquatic plants using herbicides and other techniques.

Participation in this program is free-of-charge. Pre-registration is required. Please call (772) 462-1660. Additional information is online at <http://ponds.ifas.ufl.edu>

